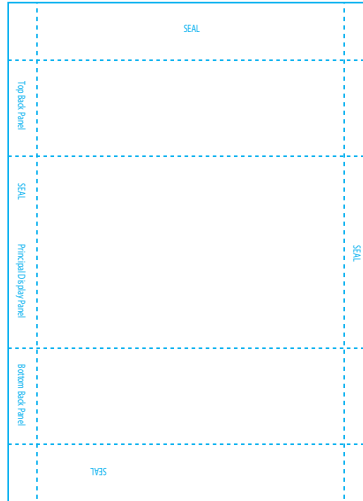


Die Line

Approved Die Line



Design Guidelines for Foil Pouch Die Line

Die Line Supplier

CMO will provide die line at 100% of final component size. The die will show where the foil pouch will be cut and sealed.

CMO will indicate, either on the die or on a separate engineering drawing, the position of any areas needed for their packaging equipment, such as Lot and Expiration date imprinting or verification code areas.

The die supplied by the CMO will become the foundation for the design.

Die can be edited according to Sunovion's preferences for line weight and color, but should not be edited for size or shape.

Line Weight

Stroke weight of all rules should be 1/2 point and should be set to overprint.

Stroke Color

Color type: Spot.

Color name: Die.

Color definition: 100% cyan preferred. Any alternate color except black can be used if cyan does not provide adequate contrast.

Helpful Information

Die supplied by CMO may contain useful information not needed for Sunovion's design approval process, such as measurements or multiple placement options. This information should remain with the file, but may be moved to an invisible layer.

Refer to physical samples to verify that any panels containing text will be visible after pouch is folded, crimped, and sealed.

Exception

CMO may request their die be used in full and unedited.